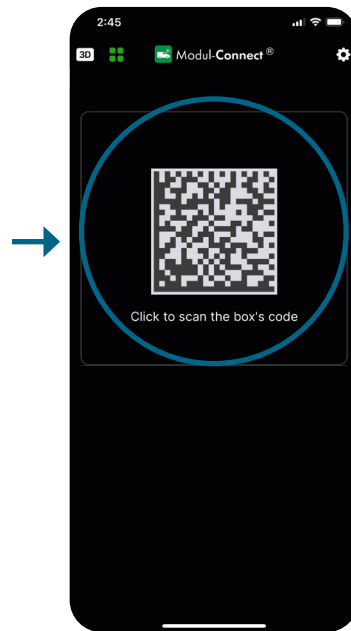


1: CONNECT TO BOX



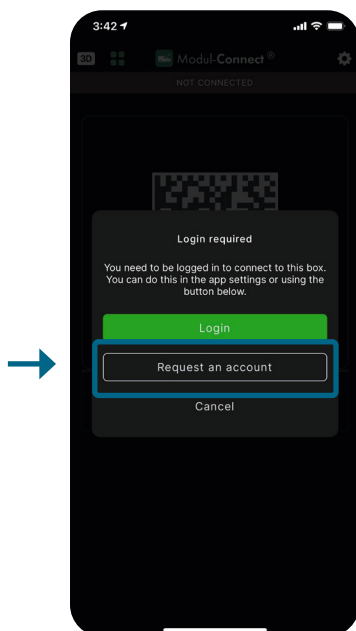
1. Open the app.



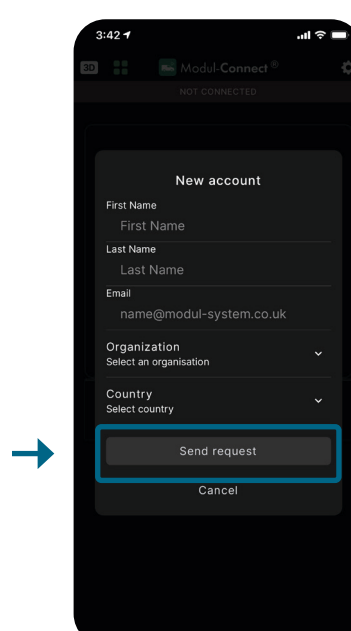
2. Click on the QR code.



3. Scan QR code.
You find the QR code at the main box or on the rear of the drivers sun visor.



4. Create an account.
You will be asked to create an account, this is needed for enable control of the accessories and log your driving journals.

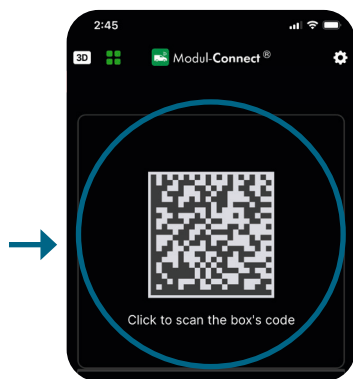


5. Fill in the details.
Fill in the details and press "Send request". **Within the next 24h you will receive an email to confirm your account.**

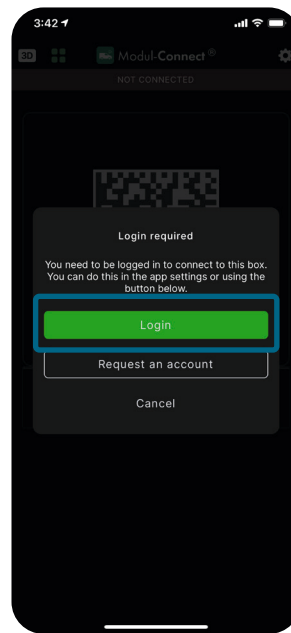
Quick start guide Modul-Connect

Ca. 24h later

After you have confirmed your account via the confirmation email, continue with step 6-8.

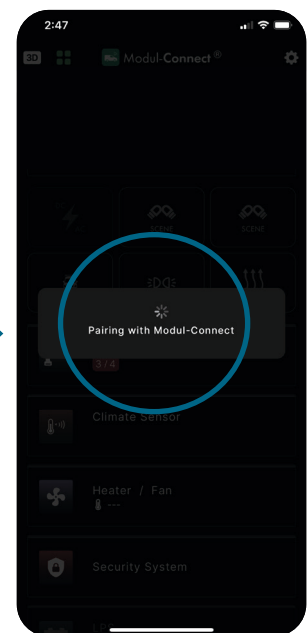


6. Repete step 2 & 3.



7. Login.

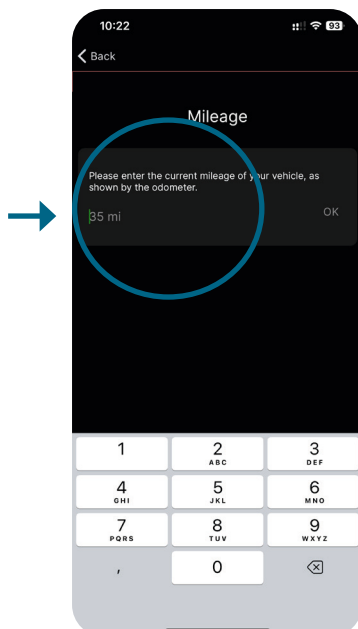
Login with the login details you entered when you created the account.



8. Pair.

The app will now pair up with the box in the van. **If the app don't pair with the box, repete step 2 & 3.**

2: SETTINGS

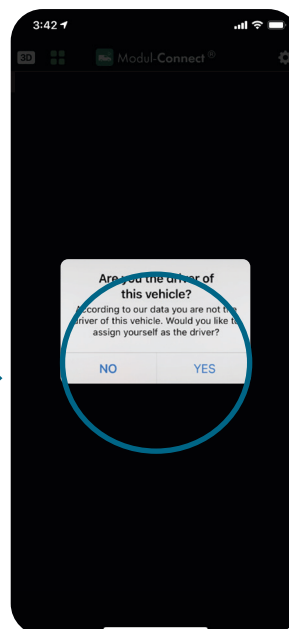


1. Fill in the odometer reading.

When connecting for the first time, you will need to fill in the milage reading for the vehicle.

If necessary, this can also be updated in the settings menu.

It is important to fill in the correct milage reading for the driving journal to be correct.



2. Driver.

The app will ask if you want to be the driver of this vehicle. If you choose "YES", the following routes will be logged for you.

If you choose "NO", the following routes will not be logged on anyone.

(More details about the driving journal later in the folder)